

FISHWAY STATUS REPORT

Date: 4/19/2014
Inspection Period: 4/13 thru 4/19/2014

All JD Fishways are inspected twice per day during fish season, March. 1 - Nov. 31
 Frequent monitoring of the PLC displays in SMF Fisheries Office as necessary.

	JOHN DAY DAM	
	JD/WC Project-Fisheries	
	P.O. Box 823	
	Rufus, Oregon 97050	
		Phone: 541-506-7860

John Day Dam	Inspections	Criteria	Total Number of Inspections: 14	Temperature: 50 F
	Out of Criteria	Limit		Secchi: 4.4 Ft.
NORTH FISHWAY			In regular service. Five AWS pumps available since 4/11.	
Exit differential	0	≤ 0.5'		
Exit Control weirs	0	High setting	High setting is normal for JDN	
Count station differential	0	≤ 0.3'		
Weir crest depth (DS gauge)	0	1.0' ± 0.1'		
Entrance differential	0	1.0' - 2.0'	AVG 1.5	
SOUTH FISHWAY			In regular service with all three AWS turbines.	
Exit differential	0	≤ 0.5'		
Exit Control weirs	0	MID setting	MID is normal for JDS	
Count station differential	0	≤ 0.3'		
Weir crest depth (US gauge)	0	1.0' ± 0.1'		
South entrance differential	0	1.0' - 2.0'	AVG 1.3	
Entrance weir SE1	0	depth (≥ 8')	AVG 8.9	
Collection channel velocity	0	1.5 - 4 fps	AVG 2.97	
Bay 1 differential	0	1.0' - 2.0'	AVG 1.6	
N. Entrance PH(Bay 19)differential	0	1.0' - 2.0'	AVG 1.6	
Entrance weir NE1	0	depth (≥ 8')	AVG 9.6	
Entrance weir NE2	0	depth (≥ 8')	AVG 9.5	
JUVENILE PASSAGE			JBS/SMF in regular service since 3/30.	
Forebay/bypass conduit differential	0	4.0' - 5.0'	AVG 4.6	
Submersible traveling screens	0	visual inspect	Underwater camera inspections occur the third week of each month.	
Turbine trashrack drawdown	0	<1.5', wkly	JD Structural raking of MU trashracks occurs the last week of each month.	
Vert barrier screen drawdown	0	<1.5', wkly	JD Fisheries crew performs frequent gate wells' drawdowns depending on river debris.	
Spill volume	0	30/40 %	Fish spill started on 4/10 as required by FPP.	
Spill pattern	0	per FPP		
Turbine Unit Priority	0	per FPP		
Turbine 1% Efficiency	0	per FPP		

SMOLT MONITORING FACILITY

Operation: SMF is in sampling mode since 3/31 AM. Daily 24 hrs smolt sampling by PSMFC crew since 4/1. **Emergency outage of JBS/SMF to remove a damaged staff gauge from the outfall channel lasted two hours on 4/14, 0830 to 1030 hrs. Kudos to JD Operations and Structural crews for their excellent and professional support!**

JD Fisheries crew started regular 24/7 swing shift schedule as required by FPP; it will continue this until the end of sampling season on 9/15.

Debris: Heavy to moderate; sticks, branches, wooden debris, tumbleweed

Maintenance:

Minor PDS screen cleaners troubleshooting and PLC adjustments continued, but the system is in regular service and performing OK.

Research:

Battelle crew's setting up for collections, tagging and holding of juvenile salmonids at JD SMF lab. Their first collection/tagging is expected in late April.

Fallbacks: AVG: 34 MAX: 47 MIN: 18

OTHER ISSUES:

JOHN DAY

Birds: See Avian tabs.

124 out of 125 primary avian lines are properly installed as of 4/5. Contractor continues with tensioning of more lines. Kudos to JD Engineering for great re-install contract executed on time ! One missing line, crossing the river shore to shore downstream of Navlock was too difficult to repair this year.

Operations:

JD North Fishway is in regular service and meeting the optimal FPP criteria.

JD South Fishway in regular service and meeting the FPP criteria.

Maintenance:

JD North AWS pumps - four out of total six are available and in service. AWS pumps # 2 and 4 continued in OOS status due to RTDs and lower bearing issues. Pump # 2 had a new motor installed and became available on 4/11. Only # 4 continues unavailable; JD Engineering/contractor are involved in planning for its repairs, starting in May.

Calibration: 4/18/2014 All sensors were within the criteria of 0.3'.

Gatewell Drawdown: 4/13/2014 and 4/16/2014 No measurements above 1.3'.

Research:

JD Fisheries coordinating with research groups for the upcoming 2014 studies:

PSMFC/WDFW dam angling for the pikeminnow will occur from the JD tailrace deck same as in the last few years.

Oregon DFW pikeminnow crew will survey JD Forebay BRZ (Oregon side) with electroshocking boat in May. BRZ entry permit is pending.

U of I Testing of JD North LPS (Lamprey Passage System) preparing for their passage season's work starting in June 2014.

Battelle's Monitoring of Juvenile Salmonids with Hydroacoustic Tags completed installation of all JD Powerhouse and Spillway hydrophones in February.

2014 Adult Salmonids counting started at both JD Fishways by the Normandeau crew on 1 April as required by FPP.

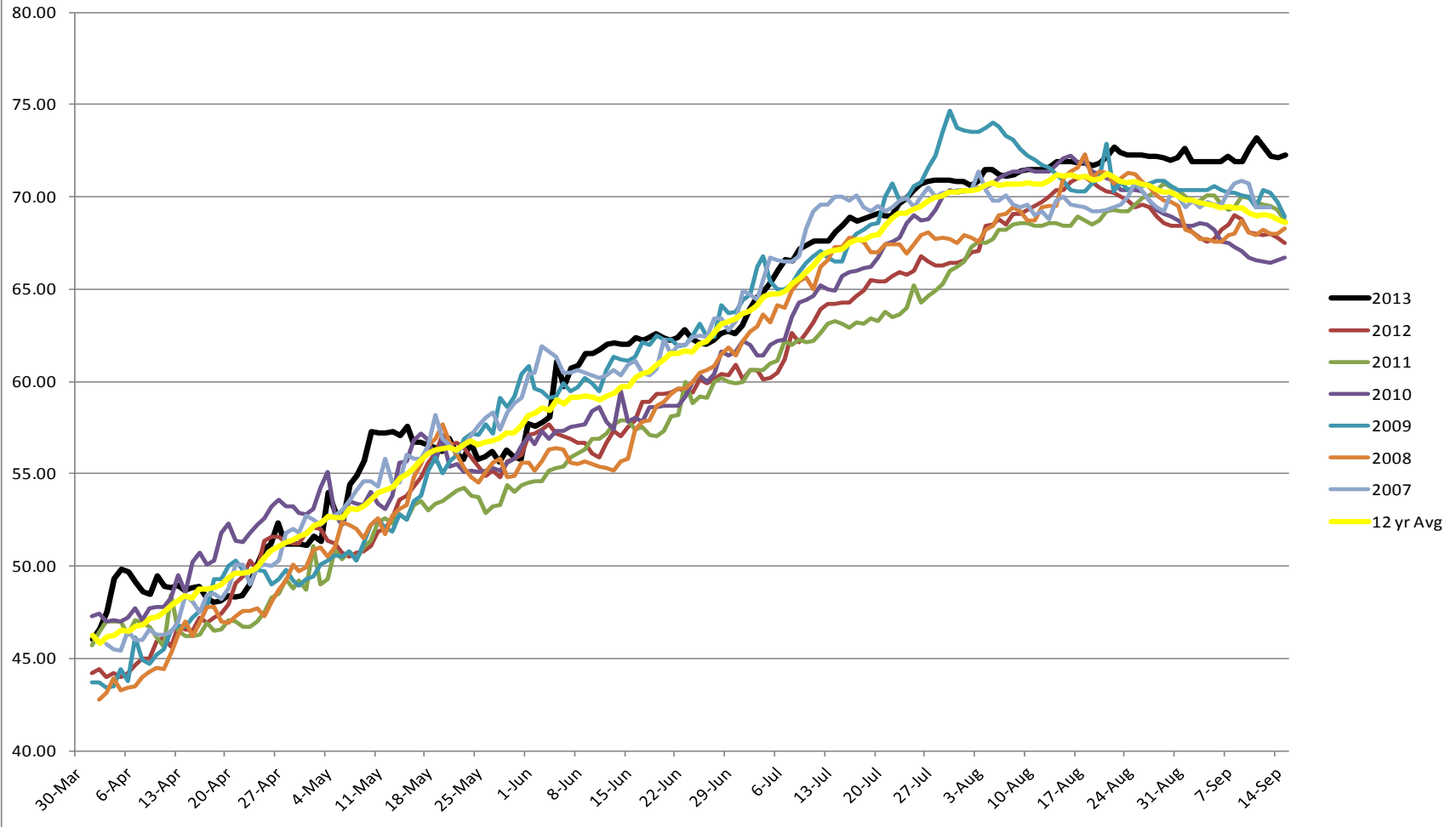
Adult Salmonids Radio telemetry evaluations are ongoing at both JD adult fishway. University of Idaho crew is in charge of detecting of all adult adult salmonids, which were tagged and released at Bonneville Dam.

Glen A. Smith PE

Date: ___ 22-Apr-14

OPM John Day/Willow Creek Project

2007-2013 Water Temps JDA w/ 12yr avg



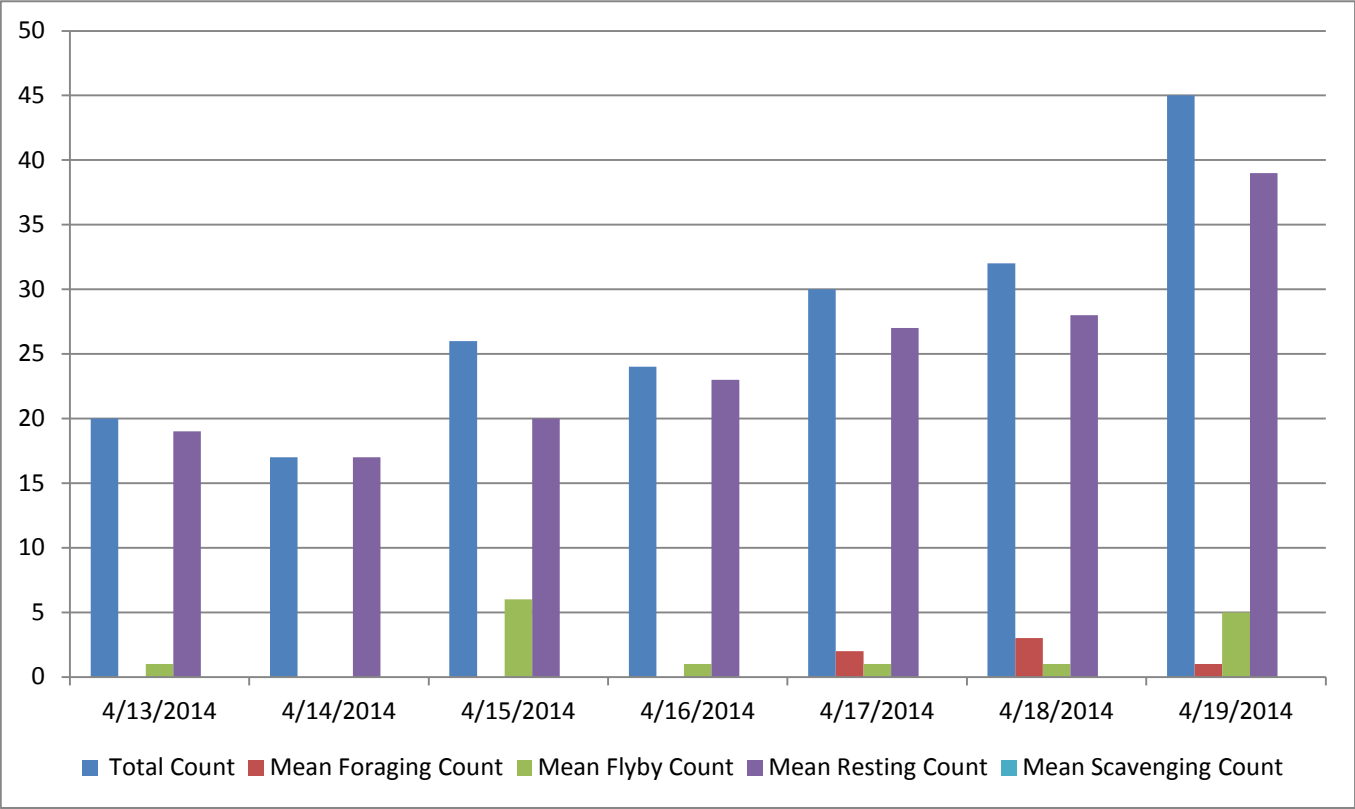
JDA COLLECTION CHANNEL VELOCITY

Date 15-Apr-14
By: pk

Bay(s)	Time	Sec.	Velocity (f/s)
0-2	01:14.0	74	2.43
2 - 4	0:02:11	131	3.16
4 - 6	0:03:12	192	2.95
6 - 8	0:04:16	256	2.81
8 - 10	0:05:18	318	2.90
10 - 12	0:06:20	380	2.90
12 - 14	0:07:19	439	3.05
14 - 16	0:08:21	501	2.90
16 - 18	0:09:11	551	3.60

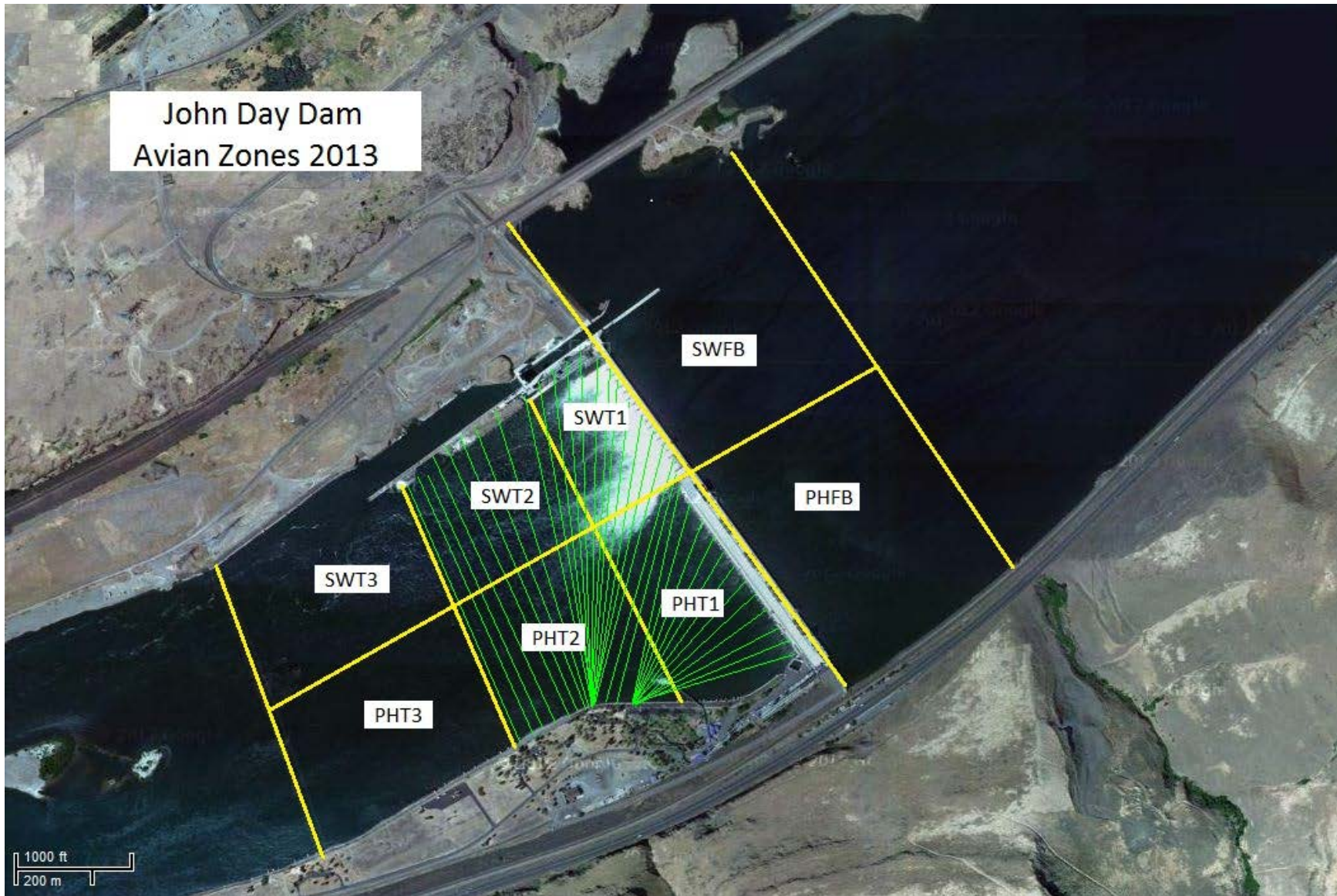
2.97

Bird Count by Activity



Date	Total Count	Mean Foraging Count	Mean Flyby Count	Mean Resting Count	Mean Scavenging Count
4/13/2014	20	0	1	19	0
4/14/2014	17	0	0	17	0
4/15/2014	26	0	6	20	0
4/16/2014	24	0	1	23	0
4/17/2014	30	2	1	27	0
4/18/2014	32	3	1	28	0
4/19/2014	45	1	5	39	0

John Day Dam
Avian Zones 2013



John Day:

	Temp:	Secchi:	Fallbacks
Sun	51	4.0	34
Mon	51	4.0	18
Tues	51	4.0	31
Wed	49	5.0	34
Thur	49	4.5	28
Fri	49	4.5	43
Sat	49	4.5	47
AVG:	50	AVG: 4.4	AVG 34
			MAX 47
			MIN 18

	NE1	NE2	S.Ent	SE1	N.Ent	JBS Diff	Bay1	Bay19
Sun	11.7	11.4	1.1	10.4	1.6	4.7	1.4	1.7
Sun	10.3	10.2	1.4	8.8	1.6	4.5	1.6	1.7
Mon	10.9	10.8	1.3	9.5	1.4	4.3	1.6	1.7
Mon	9.1	9.2	1.5	8.2	1.7	4.5	1.8	1.3
Tues	9.2	9.3	1.5	9.3	1.4	4.6	1.8	1.4
Tues	8.8	8.7	1.4	8.8	1.4	4.6	1.8	1.6
Wed	9.4	9.2	1.2	9.4	1.4	4.5	1.6	1.6
Wed	8.9	8.9	1.2	8.2	1.5	4.5	1.4	1.4
Thur	8.9	8.9	1.3	8.0	1.5	4.6	1.4	1.7
Thur	8.3	8.1	1.4	8.3	1.4	4.6	1.5	1.8
Fri	10.1	10.1	1.3	10.1	1.4	4.6	1.6	1.5
Fri	8.9	8.9	1.3	8.1	1.5	4.6	1.5	1.5
Sat	9.8	9.8	1.3	9.0	1.4	4.6	1.7	1.6
Sat	9.5	9.5	1.3	8.6	1.5	4.5	1.6	1.5
AVG:	9.6	9.5	1.3	8.9	1.5	4.6	1.6	1.6